



PN (Aluminized)		In / Out
SA160		2.0" / 2.0"
SA160A		2.25" / 2.25"
SA160B		2.5" / 2.5"
SA160C		2.5" / 2.25"
SA160D		3.0" / 3.0"
SA160E		3.0" / 2.25"
SA160F		3.0" / 2.5"



PN (Aluminized)		In / Out
SA168		2.25" / 2.25"
SA168A		2.5" / 2.5"
SA168B		3.0" / 3.0"



PN (Aluminized)		In / Out
AT200		2.0" / 2.0"
AT225		2.25" / 2.25"
AT250		2.5" / 2.5"



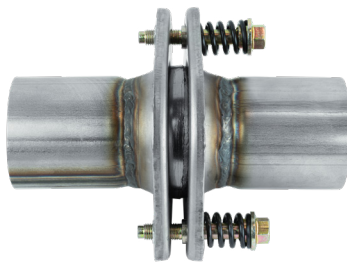
PN (Stainless)		In / Out
SA165		2.0" / 2.0"
SA165A		2.25" / 2.25"
SA165B		2.5" / 2.5"
SA165C		2.5" / 2.25"
SA165D		3.0" / 3.0"
SA165E		3.0" / 2.25"
SA165F		3.0" / 2.5"



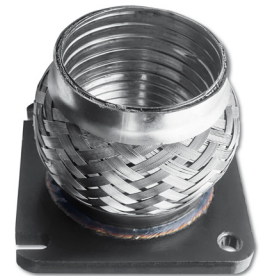
PN (Stainless)		In / Out
SA169		2.25" / 2.25"
SA169A		2.5" / 2.5"
SA169B		3.0" / 3.0"



PN (Stainless)		In / Out
ST200		2.0" / 2.0"
ST225		2.25" / 2.25"
ST250		2.5" / 2.5"



PN	In / Out
SA8050	1.75" / 1.75"
SA8051	2.0" / 2.0"
SA8052	2.25" / 2.25"
SA8053	2.5" / 2.5"
SA8054	3.0" / 3.0"



PN	Notes
SA2024	Interlocked Flex Flange, 4-Bolt 3/8" Flange, 2.25" I.D.