



(Driver)  
**SS4025113CF**  
4.0" Dual Outlet, 2.5" Inlet, Angle Cut, Clamp-On or Weld-On



(Passenger)  
**SS4025114CF**  
4.0" Dual Outlet, 2.5" Inlet, Angle Cut, Clamp-On or Weld-On



(Pair)  
**SS4025116CF**  
4.0" Dual Outlet, 2.5" Inlet, Angle Cut, Clamp-On or Weld-On



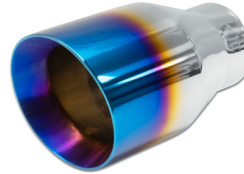
**SS4025115CF**  
4.0" Single Outlet, 2.5" Inlet, Angle Cut, Clamp-On or Weld-On



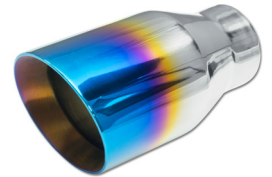
(Non-Staggered)  
**SS204BF**  
3.5" Dual Outlets, 2.25" Inlet, 10.0" OA Length, Angle Cut, Rolled Edge, Clamp-On or Weld-On



(Non-Staggered)  
**SS209BF**  
3.5" Dual Outlets, 2.25" Inlet, 9.5" OA Length, Angle Cut, Rolled Edge, Clamp-On or Weld-On



**SS201BF**  
4.0" Outlet, 2.5" Inlet, Angle Cut, Clamp-On or Weld-On



**SS202BF**  
3.5" Outlet, 2.25" Inlet, Angle Cut, Clamp-On or Weld-On



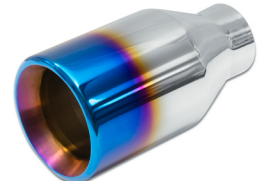
(Driver)  
**SS212BF**  
3.0" Dual Outlets, 2.25" Inlet, Angle Cut, Clamp-On or Weld-On



(Passenger)  
**SS211BF**  
3.0" Dual Outlets, 2.25" Inlet, Angle Cut, Clamp-On or Weld-On



**SS203BF**  
4.0" Outlet, 2.25" Inlet, Angle Cut, Clamp-On or Weld-On



**SS205BF**  
4.0" Outlet, 2.25" Inlet, Straight Cut, Rolled Edge, Clamp-On or Weld-On



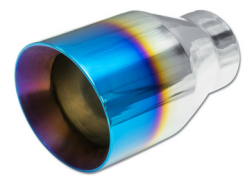
(Driver)  
**SS206BF**  
3.5" Dual Outlets, 2.25" Inlet, Angle Cut, Rolled Edge, Clamp-On or Weld-On



(Passenger)  
**SS207BF**  
3.5" Dual Outlets, 2.25" Inlet, Angle Cut, Rolled Edge, Clamp-On or Weld-On



(Pair)  
**SS208BF**  
3.5" Dual Outlets, 2.25" Inlet, Angle Cut, Rolled Edge, Clamp-On or Weld-On



**SS210BF**  
4.5" Outlet, 2.5" Inlet, Angle Cut, Clamp-On or Weld-On



**SS013A12BCH**

3.0" Outlet, 2.25" Inlet, 12.0" OA Length, Double Wall, Angle Cut, Clamp-On or Weld-On



**SS013ABCH**

3.0" Outlet, 2.25" Inlet, 8.0" OA Length, Double Wall, Angle Cut, Clamp-On or Weld-On



**SS013B12BCH**

3.5" Outlet, 2.25" Inlet, 12.0" OA Length, Double Wall, Angle Cut, Clamp-On or Weld-On



**SS013BBCH**

3.5" Outlet, 2.25" Inlet, 8.0" OA Length, Double Wall, Angle Cut, Clamp-On or Weld-On



**SS013C12BCH**

4.0" Outlet, 2.25" Inlet, 12.0" OA Length, Double Wall, Angle Cut, Clamp-On or Weld-On



**SS013CBCH**

4.0" Outlet, 2.25" Inlet, 8.0" OA Length, Double Wall, Angle Cut, Clamp-On or Weld-On



(Staggered)  
**SS130BCH**

4.0" Dual Outlets, 3.0" Inlet, 16.0" OA Length, Double Wall, Angle Cut, Clamp-On or Weld-On



**SS013212BCH**

3.5" Outlet, 2.5" Inlet, 12.0" OA Length, Double Wall, Angle Cut, Bolt-On



**SS255090BCH**

5.0" Outlet, 2.5" Inlet, 9.0" OA Length, Double Wall, Angle Cut, Clamp-On or Weld-On



**SS013B16BCH**

3.5" Outlet, 2.25" Inlet, 16.0" OA Length, Double Wall, Angle Cut, Clamp-On or Weld-On



**SS013300BCH**

4.0" Outlet, 3.0" Inlet, 12.0" OA Length, Double Wall, Angle Cut, Bolt-On



(Staggered)  
**SS30028-DSBCH**

3.5" Dual Outlets, 3.0" Inlet, 15.0" OA Length, Double Wall, Angle Cut, Clamp-On or Weld-On



**SS3050120BCH**

5.0" Outlet, 3.0" Inlet, 12.0" OA Length, Double Wall, Angle Cut, Bolt-On

**Exclusively Available Through:**





**SS013A12BLK**

3.0" Outlet, 2.25" Inlet, 12.0" OA Length, Double Wall, Angle Cut, Clamp-On or Weld-On



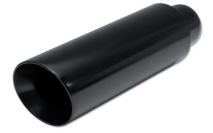
**SS013ABLK**

3.0" Outlet, 2.25" Inlet, 8.0" OA Length, Double Wall, Angle Cut, Clamp-On or Weld-On



**SS013BBLK**

3.5" Outlet, 2.25" Inlet, 8.0" OA Length, Double Wall, Angle Cut, Clamp-On or Weld-On



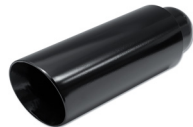
**SS013B12BLK**

3.5" Outlet, 2.25" Inlet, 12.0" OA Length, Double Wall, Angle Cut, Clamp-On or Weld-On



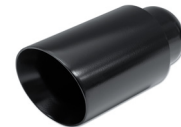
**SS013B16BLK**

3.5" Outlet, 2.25" Inlet, 16.0" OA Length, Double Wall, Angle Cut, Clamp-On or Weld-On



**SS013C12BLK**

4.0" Outlet, 2.25" Inlet, 12.0" OA Length, Double Wall, Angle Cut, Clamp-On or Weld-On



**SS013CBLK**

4.0" Outlet, 2.25" Inlet, 8.0" OA Length, Double Wall, Angle Cut, Clamp-On or Weld-On



(Staggered)  
**SS130BLK**

4.0" Dual Outlets, 3.0" Inlet, 16.0" OA Length, Double Wall, Angle Cut, Clamp-On or Weld-On



**SS013212BLK**

3.5" Outlet, 2.5" Inlet, 12.0" OA Length, Double Wall, Angle Cut, Bolt-On



**SS013300BLK**

4.0" Outlet, 3.0" Inlet, 12.0" OA Length, Double Wall, Angle Cut, Bolt-On



(Staggered)  
**SS30028-DSBLK**

3.5" Dual Outlets, 3.0" Inlet, 15.0" OA Length, Double Wall, Angle Cut, Clamp-On or Weld-On



(Non-Staggered)  
**SS253595BLK**

3.5" Dual Outlets, 2.25" Inlet, 9.5" OA Length, Double Wall, Angle Cut, Clamp-On or Weld-On



**SS254060BLK**

4.0" Outlet, 2.5" Inlet, 6.0" OA Length, Double Wall, Angle Cut, Clamp-On or Weld-On



**SS254090BLK**

4.0" Outlet, 2.5" Inlet, 9.0" OA Length, Double Wall, Angle Cut, Weld-On



**SS254590BLK**

4.5" Outlet, 2.5" Inlet, 9.0" OA Length, Double Wall, Angle Cut, Clamp-On or Weld-On



**SS2254018BLK**

4.0" Outlet, 2.25" Inlet, 18.0" OA Length, Double Wall, Angle Cut, Clamp-On or Weld-On



**SS2540525BLK**

4.0" Outlet, 2.5" Inlet, 5.25" OA Length, Double Wall, Angle Cut, Clamp-On or Weld-On



**SS3040525BLK**

4.0" Outlet, 3.0" Inlet, 5.25" OA Length, Double Wall, Angle Cut, Clamp-On or Weld-On



**SS2253570BLK**

3.5" Outlet, 2.25" Inlet, 7.0" OA Length, Double Wall, Angle Cut, Clamp-On or Weld-On



**SS255090BLK**

5.0" Outlet, 2.5" Inlet, 9.0" OA Length, Double Wall, Angle Cut, Clamp-On or Weld-On



**SS305090BLK**

5.0" Outlet, 3.0" Inlet, 9.0" OA Length, Double Wall, Angle Cut, Clamp-On or Weld-On

**Exclusively Available Through:**





(Non-Staggered)  
**SS253095**  
3.0" Dual Outlets, 2.5" Inlet, 9.5" OA Length, Double Wall, Angle Cut, Clamp-On or Weld-On



(Passenger Side)  
**SS253095R**  
3.0" Dual Outlets, 2.5" Inlet, 9.5" OA Length, Double Wall, Angle Cut, Clamp-On or Weld-On



(Staggered)  
**SS253518**  
3.5" Dual Outlets, 2.5" Inlet, 18.0" OA Length, Angle Cut, Clamp-On or Weld-On



**SS254012**  
4.0" Outlet, 2.5" Inlet, 12.0" OA Length, Double Wall, Angle Cut, Clamp-On or Weld-On



**SS254590**  
4.5" Outlet, 2.5" Inlet, 9.0" OA Length, Double Wall, Angle Cut, Clamp-On or Weld-On



**SS255090**  
5.0" Outlet, 2.5" Inlet, 9.0" OA Length, Double Wall, Angle Cut, Clamp-On or Weld-On



(Passenger Side)  
**SS304012R**  
4.0" Dual Outlets, 3.0" Inlet, 12.0" OA Length, Double Wall, Angle Cut, Clamp-On or Weld-On



(Passenger Side)  
**SS2253085**  
3.0" Dual Outlets, 2.25" Inlet, 8.5" OA Length, Double Wall, Angle Cut, Clamp-On or Weld-On



(Non-Staggered)  
**SS2253595**  
3.5" Dual Outlets, 2.25" Inlet, 9.5" OA Length, Double Wall, Rolled Edge, Angle Cut, Clamp-On or Weld-On



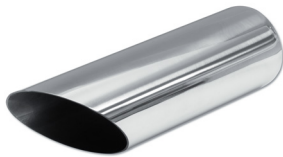
(Driver Side)  
**SS2253595L**  
3.5" Dual Outlets, 2.25" Inlet, 9.5" OA Length, Double Wall, Rolled Edge, Angle Cut, Clamp-On or Weld-On



(Passenger Side)  
**SS2253595R**  
3.5" Dual Outlets, 2.25" Inlet, 9.5" OA Length, Double Wall, Rolled Edge, Angle Cut, Clamp-On or Weld-On



**SS2527590**  
2.75" Outlet, 2.5" Inlet, 9.0" OA Length, Single Wall, Rolled-Edge, Weld-On



**SS2527590AC**  
2.75" Outlet, 2.5" Inlet, 9.0" OA Length, Single Wall, Angle Cut, Weld-On



**SS2540725**  
4.0" Outlet, 2.5" Inlet, 7.25" OA Length, Single Wall, Rolled-Edge, Straight Cut, Clamp-On or Weld-On



(Non-Staggered)  
**SS2562595**  
6.25" Dual Outlets, 2.5" Inlet, 9.5" OA Length, Double Wall, Rolled Edge, Angle Cut, Clamp-On or Weld-On



**SS3040525**  
4.0" Outlet, 3.0" Inlet, 5.25" OA Length, Double Wall, Angle Cut, Weld-On



(Non-Staggered)  
**SS22535975**  
3.5" Dual Outlets, 2.25" Inlet, 9.5" OA Length, Double Wall, Rolled Edge, Angle Cut, Clamp-On or Weld-On

**Exclusively Available Through:**

